

FWM
DOCKS



BEAUTIFUL
**CUSTOM DOCK
SOLUTIONS**



FWM DOCKS CATALOG

Aluminum Dock Systems & Accessories

Why Choose FWM Docks

Have a great waterfront story? Throughout our many years in business, we have heard them all. The issues and hassles with yearly dock maintenance, the crazy installation and removals. With FWM, those nightmares are all in the past. Let us help you forget the mess and start enjoying your weekends again!



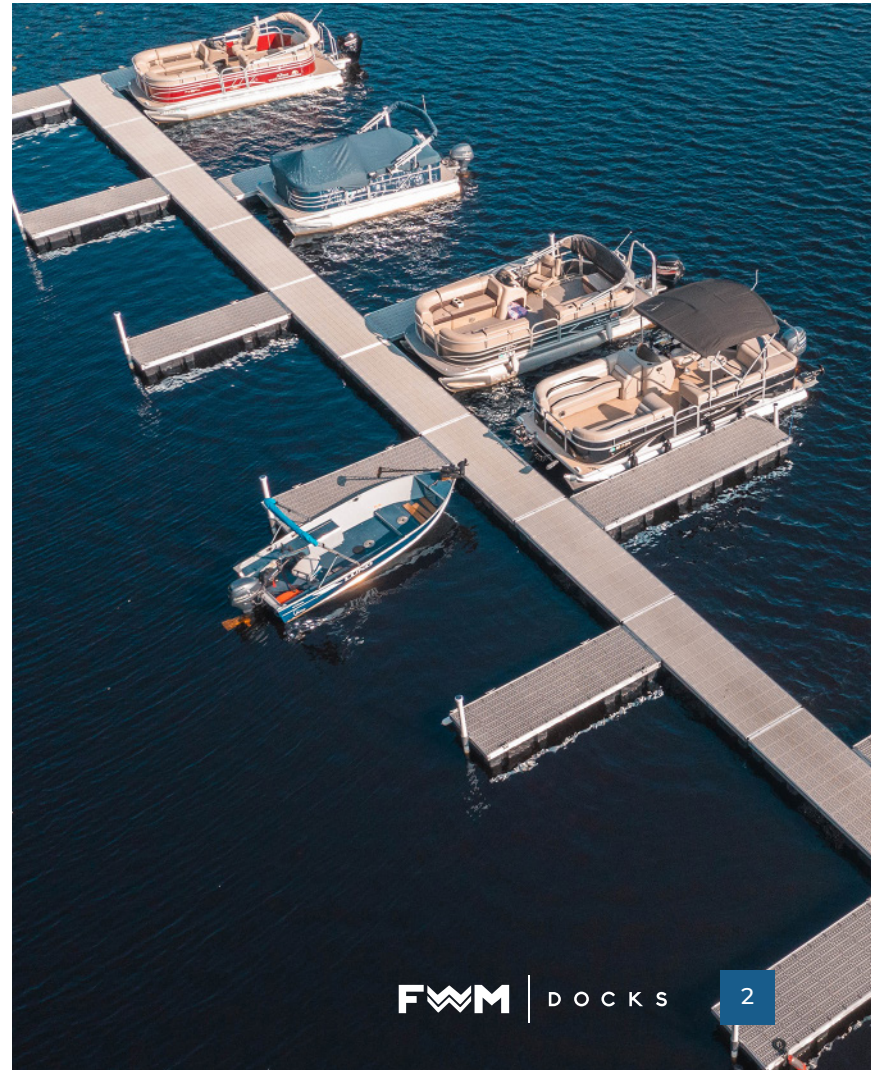
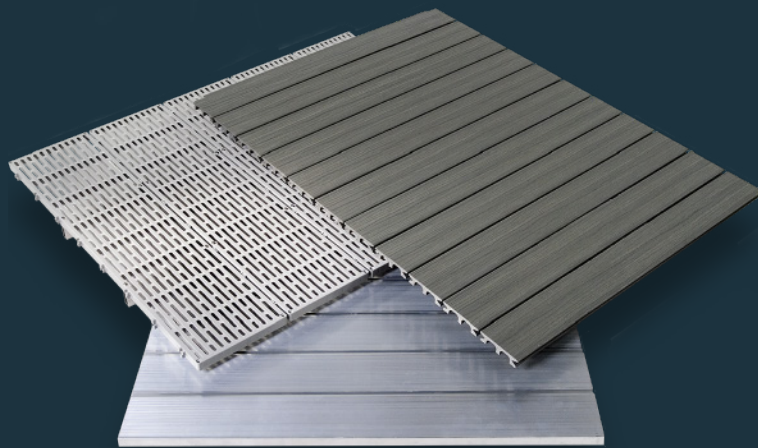
Innovative, Versatile, Durable

Our industry-leading aluminum docks are easy to install, extraordinarily durable and practically maintenance free. They feature a lightweight, modular frame design that makes it easy for you to create your own custom dock in any layout or configuration you choose.

Superior Construction, Exceptional Stability

Crafted with passion and purpose by highly skilled aluminum welders and fabricators in our cutting-edge New Hampshire manufacturing facility since 1975.

- Superior Materials and Construction
- Attractive Look and Feel
- Customizable with a Variety of Decking Surfaces
- Exceptional Stability in the Water
- Easy-to-Connect Dock Sections and Accessories
- Little to No Maintenance Required
- Easy to Install, Remove, Expand
- Slip-Resistant Surfaces for Safety
- Environmentally Friendly



Applications

Our stationary, rolling and floating dock systems are ideal for homeowners, marinas, and commercial uses, public parks and recreation areas, and much more.

Residential



We make it easy to enhance your enjoyment of your waterfront home.

Marinas/Commercial



Our versatile, durable dock products and accessories are perfect for small to mid-size marinas.

Camp and Parks

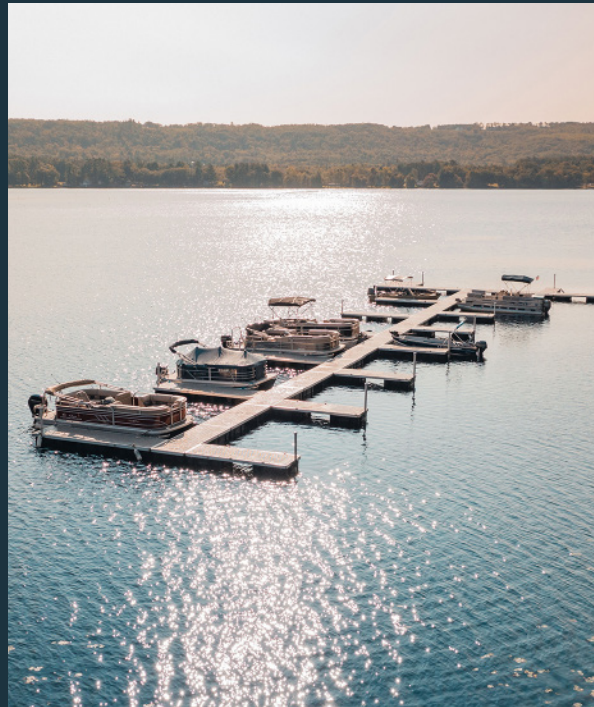
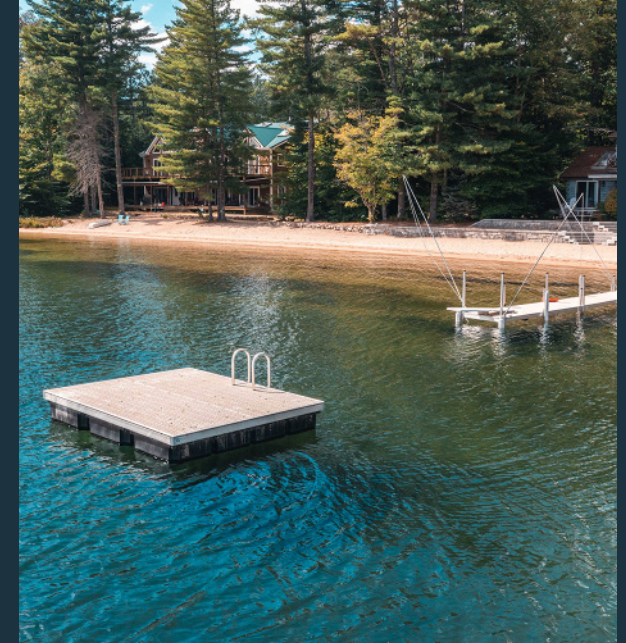


Create attractive, low-maintenance docks, swimming floats, boat and kayak launches; easily rearrange or expand your layout for special events or changing needs.

Trail Systems



Our products can be used to create elevated walkways (up to 10' above ground) to make it easier for hikers to traverse wet areas in parks/nature trails.

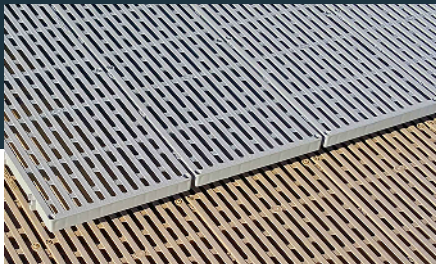




PERFECT
FOR NEARLY ALL
WATERFRONT USES

Decking

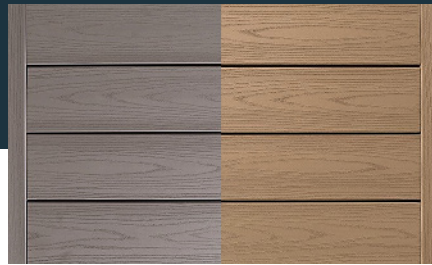
At FWM Docks, we spend a tremendous amount of time testing and analyzing decking products. Our select decking options have been tested by the FWM engineers to give you a range of options for the perfect solution on your waterfront. Our decking products come pre-panelized to allow for easy removal and installation. Each decking panel fits right into your dock frame, providing a clean, flush appearance.



ThruFlow Decking



Allows water, debris, and sunlight to pass through small holes in your walking surface. The 360° non-slip surface not only prevents you and your guests from slips and falls but also minimizes the damaging effects of waves and wind. Each decking panel is held in place with four color-coded set screws for easy removal. Available in cedar or gray.



Azek Harvest Collection



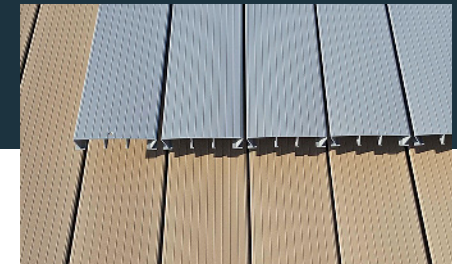
The Azek Harvest will enhance the beauty of your new FWM Dock system. This nature-inspired collection offers a traditional cathedral wood grain pattern and is made of capped polymer material. It is engineered to resist moisture damage and is perfect for use on docks. The harvest collection offers up to 40% better slip resistance than many competitive composite products and stays up to 30 degrees cooler than many competitive composite products. Available in Harvest Gray & Brownstone.



Azek Landmark Collection



The all-new Azek Landmark Collection is inspired by the look of weathered, reclaimed wood. It offers a cathedral wood grain pattern with a unique cross-cut texture and matte finish. Each color boasts a color variation of light to dark along with highlights and lowlights to create a dramatic, cascading color effect. The capped polymer board has superior resistance to moisture, tremendous slip resistance, and a great temperature profile. Available in Castlegate (Gray) & French White Oak.



Aluminum Decking

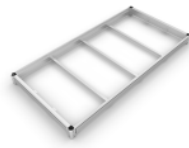


Our customized, natural aluminum finish decking is designed with a non-slip surface pattern and a heat sync bottom. The unique design draws heat away from the walking surface and down toward the water, keeping your dock comfortably cool even on the hottest summer days. Also available in gray or brown finish.

Dock Frames

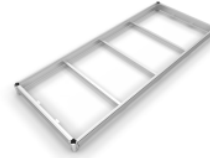
FWM Dock frames come in a wide range of standard sizes and are designed to be 100% modular, making it easy for you to configure the exact dock layout you need. Your docks layout is restricted only by your imagination.

STANDARD STATIONARY & ROLLING FRAME SIZES/WEIGHTS:



4' x 8'

Weight: 72lbs.



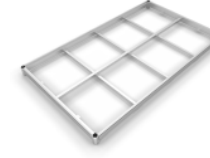
4' x 10'

Weight: 89 lbs.



4' x 12'

Weight: 98 lbs.



6' x 10'

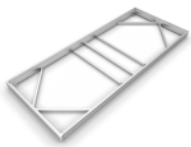
Weight: 118 lbs.



Corner Gusset

Weight: 29 lbs.

STANDARD FLOATING FRAME SIZES & WEIGHTS WITH FLOATS:



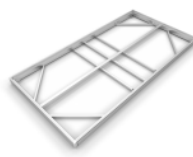
4' x 10'

Weight: 177 lbs.



4' x 12'

Weight: 186 lbs.



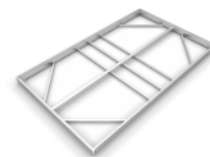
5' x 10'

Weight: 242 lbs.



5' x 12'

Weight: 249 lbs.



6' x 10'

Weight: 248 lbs.



FIND THE DOCK THAT'S RIGHT FOR YOU

Visit us online and fill out our customized questionnaire that will help guide you in your hunt for the perfect dock solution.

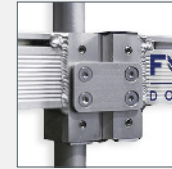
Stationary Docks

The FWM Stationary Dock is a great choice for almost any waterfront, especially depths of 10 feet or less. Known for its outstanding stability, it features aluminum legs and pole pads and stainless-steel hardware.

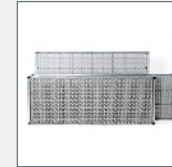
Our aluminum stationary dock systems are designed for a wide range of uses, including residences, parks and recreation, homeowner associations, marinas and more. FWM Docks' state-of-the-art modular frame design provides an endless number of dock system configurations to meet all of your waterfront needs.



1. Leg Pad



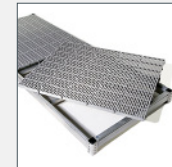
2. Splice Kits



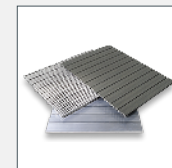
3. Modular Frame
Four Standard Sizes



4. Track System



5. Panelized
Decking



6. Decking
Options



LIGHTWEIGHT EASY TO INSTALL SUPERIOR STABILITY

1. Leg Pad: Each heavy-walled pole has two pre-drilled holes on the bottom allowing the leg pad to be placed flush to the bottom (for rocky/solid environments) or a secondary position that allows the dock leg to pass through the leg pad and penetrate the ground, providing a more secure anchoring stance for your dock.

2. Splice Kits: Easily connect two dock sections with a standard or parallel splice kit. The all aluminum and stainless steel construction will give you the security you need even during inclement weather. If this doesn't make building your dock easy enough, in the winter, the dock breaks down into sections using just one allen key. Now you have an easy portable dock or port a dock.

3. Modular Frame/Four Standard Sizes: FWM frames are available in four sizes (4'x8', 4'x10', 4'x12', 6'x10'). They are designed to be 100% modular and can be put together in an endless number of layouts and configurations. Your dock layout is restricted only by your imagination. You can even change the style of your dock from your initial purchase into any of our three styles (stationary, rolling, or floating).

4. Track System: Put the drill away. FWM frames come with a track system on the side and bottom of the frame making the mounting of accessories a snap. Need to move a cleat or aluminum ladder from one position to another? No problem, loosen the screw, slide, and re-tighten. It's that easy.

5. Panelized Decking: Each dock section comes with the decking installed in pre-panelized decking pieces (two or four). This allows you to dramatically reduce the weight of your dock by almost 50% in a matter of minutes making seasonal installation and removal a breeze.

6. Decking Options: At FWM Docks, we spend a tremendous amount of time testing and analyzing decking products. Our select decking options have been tested by the FWM engineers to give you a range of options for the perfect solution on your waterfront. Our decking products come pre-panelized to allow for easy removal and installation. Each decking panel fits right into your dock frame, providing a clean, flush appearance. (SEE PAGE 5)

Rolling Docks

The portability offered by our rugged 25" polyethylene wheels makes it incredibly easy to roll your dock into and out of the water. The FWM Rolling Dock is ideal for smooth shorelines that are free of large rocks or obstacles.



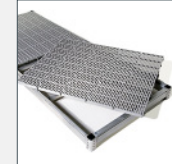
1. Dock Wheels



2. Leg Pad



3. Splice Kits



4. Panelized Decking



5. Corner Bracket



6. Track System



SUPERIOR CONSTRUCTION MODULAR DESIGN

1. Dock Wheels: Our 25" heavy duty polyethylene wheels are designed with a wide stance for improved rolling function and stability. The dock wheel can be positioned on the outside or inside of your dock frame.

2. Leg Pad: Each heavy-walled pole has two pre-drilled holes on the bottom allowing the leg pad to be placed flush to the bottom (for rocky/solid environments) or a secondary position that allows the dock leg to pass through the leg pad and penetrate the ground, providing a more secure anchoring stance for your dock.

3. Splice Kits: Easily connect two dock sections with a standard or parallel splice kit. The all aluminum and stainless steel construction will give you the security you need even during inclement weather. If this doesn't make building your dock easy enough, in the winter, the dock breaks down into sections using just one allen key. Now you have an easy portable dock or port a dock.

4. Panelized Decking: Each dock section comes with the decking installed in pre-panelized decking pieces (two or four). This allows you to dramatically reduce the weight of your dock by almost 50% in a matter of minutes making seasonal installation and removal a breeze.

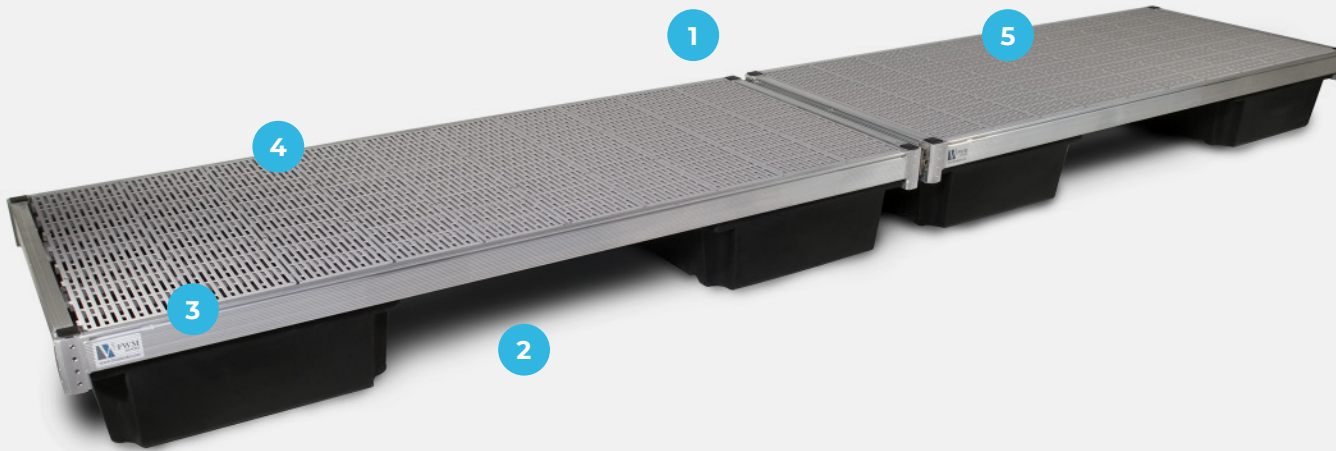
5. Corner Bracket: Built-in corner brackets allow for a flush internal pole design, out of the way of your boat or personal watercraft. Each comes standard with two inserts and two set screws. The inserts can be reversed to allow for effortless layout changes. Two cup point set screws allow you to securely set your dock at the desired height above water.

6. Track System: Put the drill away. FWM frames come with a track system on the side and bottom of the frame making the mounting of accessories a snap. Need to move a cleat or aluminum ladder from one position to another? No problem, loosen the screw, slide and re-tighten. It's that easy.

Floating Docks

Ideal for Deep or Fluctuating Water Levels

Our versatile FWM Floating Docks — featuring a heavy-duty modular aluminum frame, 13" freeboard height and commercial-grade flotation capacity — are ideal for projects of any size on practically any waterway.



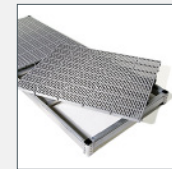
1. Piano Hinge Connection



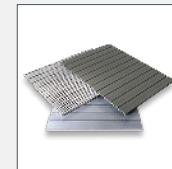
2. Flotation Drum



3. Track System



4. Panelized Decking



5. Decking Options



ENDLESS CONFIGURATIONS BUILT TO LAST

1. Piano Hinge Connection: Easily absorb the energy of incoming waves with our custom extruded hinge kit.

2. Flotation Drum: Seamless shell design prevents leakage and separation. The drum wall is made of tough virgin polyethylene with ultraviolet inhibitors to prevent damage from the sun, debris, oil, gas, marine organisms, salt, and fresh water.

3. Track System: Put the drill away. FWM frames come with a track system on the side and bottom of the frame making the mounting of accessories a snap. Need to move a cleat or aluminum ladder from one position to another? No problem, loosen the screw, slide and re-tighten. It's that easy.

4. Panelized Decking: Each dock section comes with the decking installed in pre-panelized decking pieces (two or four). This allows you to dramatically reduce the weight of your dock by almost 50% in a matter of minutes making seasonal installation and removal a breeze.

5. Decking Options: At FWM Docks, we spend a tremendous amount of time testing and analyzing decking products. Our select decking options have been tested by the FWM engineers to give you a range of options for the perfect solution on your waterfront. Our decking products come pre-panelized to allow for easy removal and installation. Each decking panel fits right into your dock frame, providing a clean, flush appearance. (SEE PAGE 5)

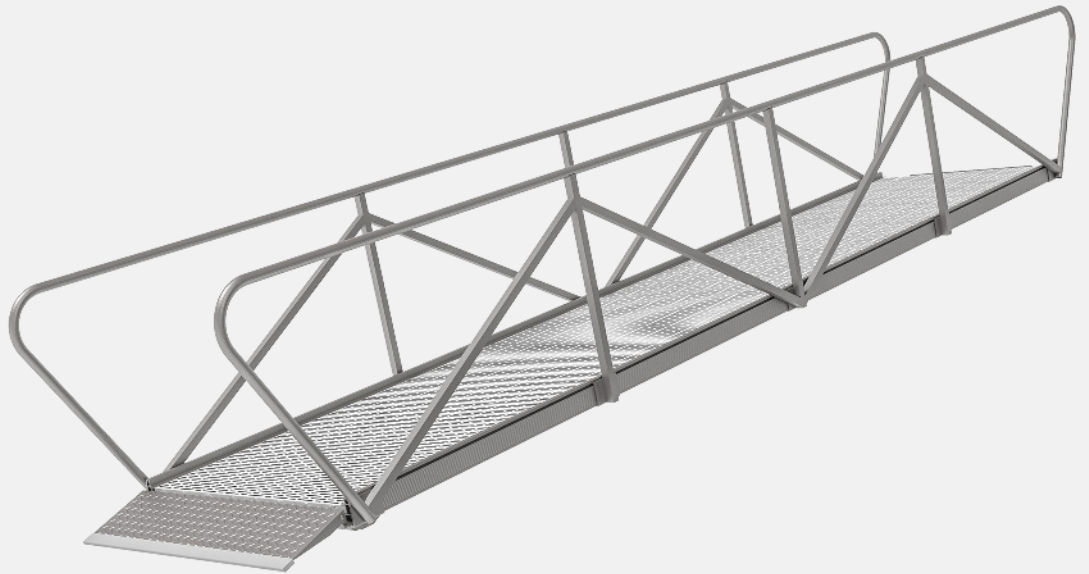
Gangways & Ramps

Connect Your Dock to Land with a Safe, Sturdy Gangway. Bridge the distance between dry land and your dock with one of our specially designed aluminum gangways. Ideal for residential or commercial, fresh or saltwater settings, our gangways offer sturdy, non-slip access to your dock system, no matter the conditions. Gangway sections come in a variety standard lengths and widths, with custom sizes also available. Our connection systems make it easy to attach gangways/ramps to your dock system and easy to attach and remove railings from the gangways themselves. FWM Docks gangways come in your choice of aluminum or ThruFlow decking.

Modular Design in a Variety of Sizes



Available in standard 3' and 4' widths. Standard lengths start at 10' and increase in 5' increments up to a maximum length of 30'. Custom sizes and widths are also available.



3' x 10'

Weight: 180 lbs.

3' x 15'

Weight: 270 lbs.

3' x 20'

Weight: 360 lbs.

3' x 25'

Weight: 450 lbs.

3' x 30'

Weight: 535 lbs.

4' x 10'

Weight: 205 lbs.

4' x 15'

Weight: 305 lbs.

4' x 20'

Weight: 405 lbs.

4' x 25'

Weight: 505 lbs.

4' x 30'

Weight: 605 lbs.

Swim Float

Enhance your water experience with FWM Docks swim floats. Easily customize your swim area with ladders, benches, and other accessories for endless fun. Our slip-resistant surfaces and innovative flotation technology ensure a safe, stable platform perfect for personal and public use. The modular design allows you to create a custom-sized “aqua patio” using our versatile 8' x 10' sections. Choose from various standard deck surfaces and enjoy the added convenience of a kayak-friendly, low-lying design.



Safe, Stable Platform



With a convenient track system designed for a smooth connection of ladders and other accessories, your FWM Swim Float is great for getting offshore and swimming in deeper waters



8' x 10'

Weight: 366 lbs.

BUILD WHATEVER SIZE YOU NEED

FWM Docks swim floats come in standard 8'x10' sections that offer endless possibilities to expand.

FWM Accessories



1



2



3



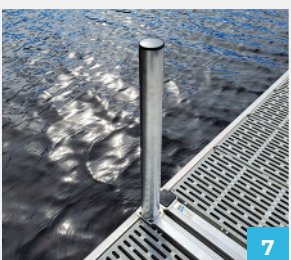
4



5



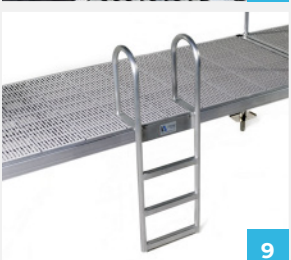
6



7



8



9



10

1. Tie Down Cleat: Our strong 8" aluminum dock cleats are the perfect companion when poles are not an option. The cleat mounts right to our frames track system making installation and adjustments a snap. No drilling required!

2. Adjustable Vertical Bumper: Do you really need to adjust the height of your dock above the water? Why not just adjust the bumper? These 35" bumpers can move anywhere on your dock frame and can adjust up to 30" so they're always in the correct position for your boat.

3. Solar Lights: Add solar lights to illuminate your dock after dusk. Easy to install.

4. Corner Bumper: Protect your dock and boat with this high-quality inflatable rubber bumper.

5. Horizontal Bumper: The Horizontal Bumpers give you the lateral protection where the Adjustable Vertical Bumpers can not. Most commonly used in together delivering the ultimate protection.

6. Kayak & Canoe Roller: Easily get your Canoe or Kayak out of the water and up on the dock with the dock roller. Makes the job easy while at the same time protect your toys.

7. FWM Post Sleeve: Lake beds change over time, instead of trimming the poles again, add post sleeves for a uniform height above the dock.

8. Mooring Whips: Acting as a spring, each whip set is comprised of two solid fiberglass rods allowing you to easily secure your boat to the dock. Whips include a durable machined base designed to fit in the track system of any of our standard frames. Available in multiple sizes.

9. Ladder: All aluminum and precision welded, this three step ladder makes getting in and out of the water a breeze. Easily connects into the track system of you FWM Dock frame.

10. Boarding Step: A great addition to your FWM stationary or rolling dock system. The boarding step is available in ThruFlow Gray or Brown. This multipurpose 4' or 6' plank is great for getting in and out of your boat, kayak, or canoe. Also nice to use a water bench on a hot summer day!

11. Boarding Post : The Boarding Post makes getting in and out of your boat a cinch. It is designed to bolt into the track system of your FWM Dock frame.

12. Stairs: The FWM self-leveling Four Step Stair System is a great way to access the water. The 3' wide ThruFlow Decking steps are non-slip and allow for a firm footing when getting into and out of the water. The stairs can be installed on any brand stationary or rolling dock system. All aluminum and 316SS construction.

13. FWM Bench Kit: The FWM bench kit comes with everything needed to relax on the water. Available in (2) color options that complement all decking options.

14. Corner Gusset: This uniquely designed corner gusset fits perfectly onto your aluminum dock.

15. Railings: The FWM aluminum railings are available in a variety of sizes. Each railing is designed to attach to the track system on your FWM Dock frame.

16. Transition Ramp: Let your FWM Dock meet the shore seamlessly with the shoreline transition ramp. Multiple sizes and decking options are available.

17. Kayak Rack: Now you can turn any FWM Dock section into a kayak rack. Easily hang your Canoe or Kayak out of the water and up on the dock with the kayak rack.

18. Vertical Bumper: These bumpers mount in the retention track anywhere on the outside of your dock frame. You can even inflate the bladder of the bumper to give your watercraft some added cushion and protection.

19. Solar Dot: This subtle solar light fits into the empty corner block void on your FWM dock frame. A great way to add some ambiance and safely light a walking path at night.

20. Flag Pole: 18' fiberglass non-conductive flag pole comes complete with a USA flag. The modular base bracket connects to your FWM frames track system and is designed to withstand high winds.



11



12



13



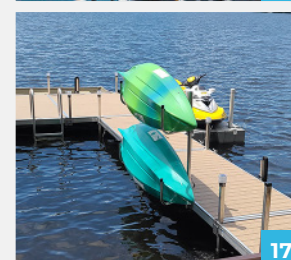
14



15



16



17



18

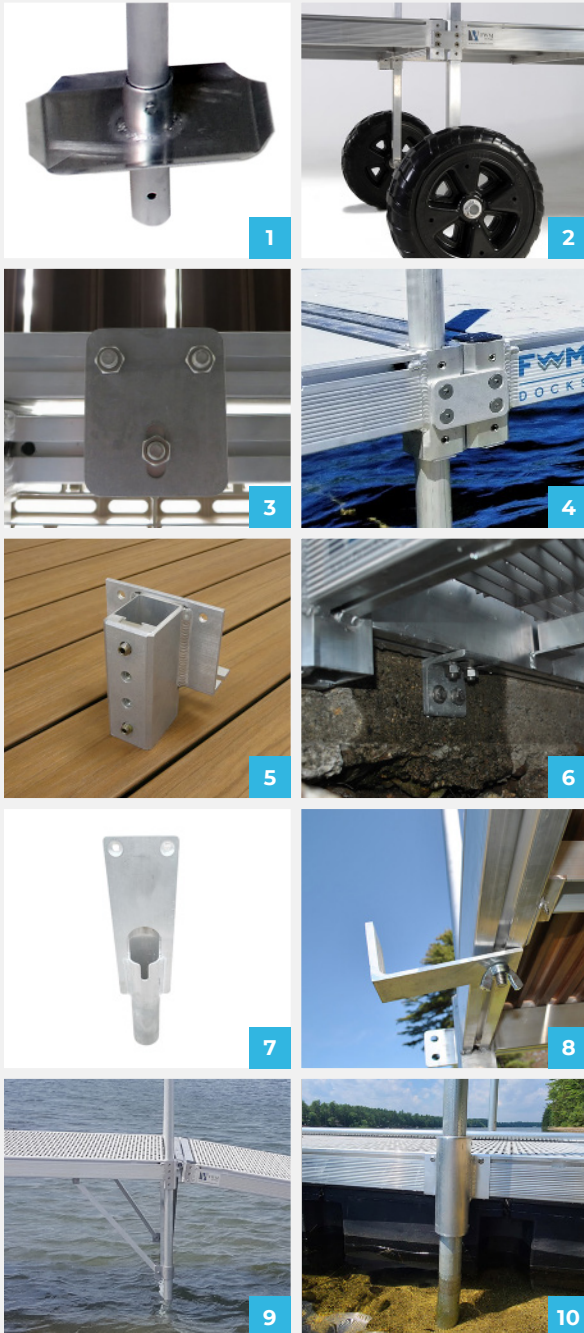


19



20

FWM Anchoring & Hardware



1. Leg Pads: Place them either flush to the bottom in a rocking environment, or set them 8 inches from the bottom of the leg to allow a portion of the pole to securely penetrate the ground. The beveled edge provides for easy installation and removal.

2. Wheel Kits: Turn your stationary dock into a rolling dock. Thick-walled aluminum square tubing in lengths from 4' to 10' with 25" dock wheel.

3. Parallel Splice Kit: Parallel Splice Kit allows the connection of an additional dock section of equal length to the left or right-hand side.

4. Standard Splice Kit: Connect dock sections together in seconds with our standard aluminum splice kit. Easily attaches to the corner brackets with flat head screws to maintain the flush finish.

5. External Pole Bracket: Do you need an extra pole to secure your rolling dock? Do you need an handle to help entering and exiting your kayak or canoe. Our unique external pole bracket mounts onto our frames track system and allows for the easy mounting with 2" OD Pipe.

6. Abutment Angle: Easily links an FWM stationary or rolling aluminum dock section to you shoreline or existing dock using the abutment kit.

7. Deadweight Bracket: Now you can anchor your FWM floating dock to a rocky bottom or deep water area. It is adjustable to any location on your docks frame.

8. Installation Clip: Allows you to rest the dock section while installing necessary Splice Kit.

9. 45 Cross Brace: This single-arm cross brace uses our custom two-piece shaft collar extrusion to easily mount to the stationary dock leg minimizing any unwanted movement on the walking surface.

10. Floating Dock Pipe Bracket: Let your FWM Floating Dock adjust effortlessly to changing water levels. This bracket is designed for a 2" Galvanized Pipe.

11. Gangway Roller: Newly redesigned roller kit is hidden beneath the gangway's decking. It provides a clean, finished look to your gangway. The roller has been designed to minimize scuffing and scraping on the walking surface.

12. Gangway Transition Plate: A popular gangway add on, the transition plate cleans up the dock side of the gangway and allows for an almost uninterrupted transition between dock and gangway. ADA Compliant.

13. Dock Section Roller Kit: Now you can turn any FWM Dock section into a light-duty gangway. Simply add a roller kit to our standard frame corner brackets to let it adjust to the changing water level.

14. Abutment Hinge Kit: Connect your Gangway or Dock section to your shoreline abutment with this custom extruded hinge kit.

15. Piling Bracket: Works with piling ranging in diameter for 6" to 20". HDPE internal rollers allow the dock and bracket to transition up and down the piling effortlessly.

16. Dock Hinge Kit: This custom extruded hinge kit will connect two FWM dock frames. In a floating dock environment, it will allow your dock to absorb oncoming wave action. On a Stationary or Rolling dock, it will allow you to change the angle of an individual dock section.

17. Cross Brace: This uniquely engineered bracing technology allows for easy installation with maximum stability.

18. Pyramid Anchor: Works in the upside-down position with the apex pointing down. As the anchors are encountered with lateral pulls, the side edges or corners of the pyramids will dig deeper under the floor, creating stability.

19. Mushroom Anchor: Work best for softer seabeds. They are shaped like an upside-down mushroom, which can be easily buried in mud or silt. The advantage is that it has up to ten times the holding-power-to-weight ratio compared to a dead weight mooring.

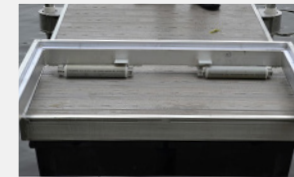
20. Mud Pad: 16" x 16" Stationary Dock leg pad is designed to be used when soil conditions are excessively mucky .



11



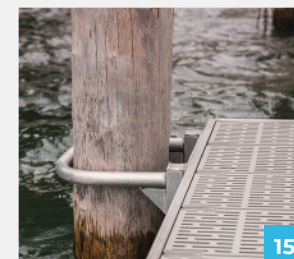
12



13



14



15



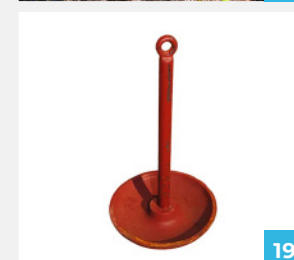
16



17



18



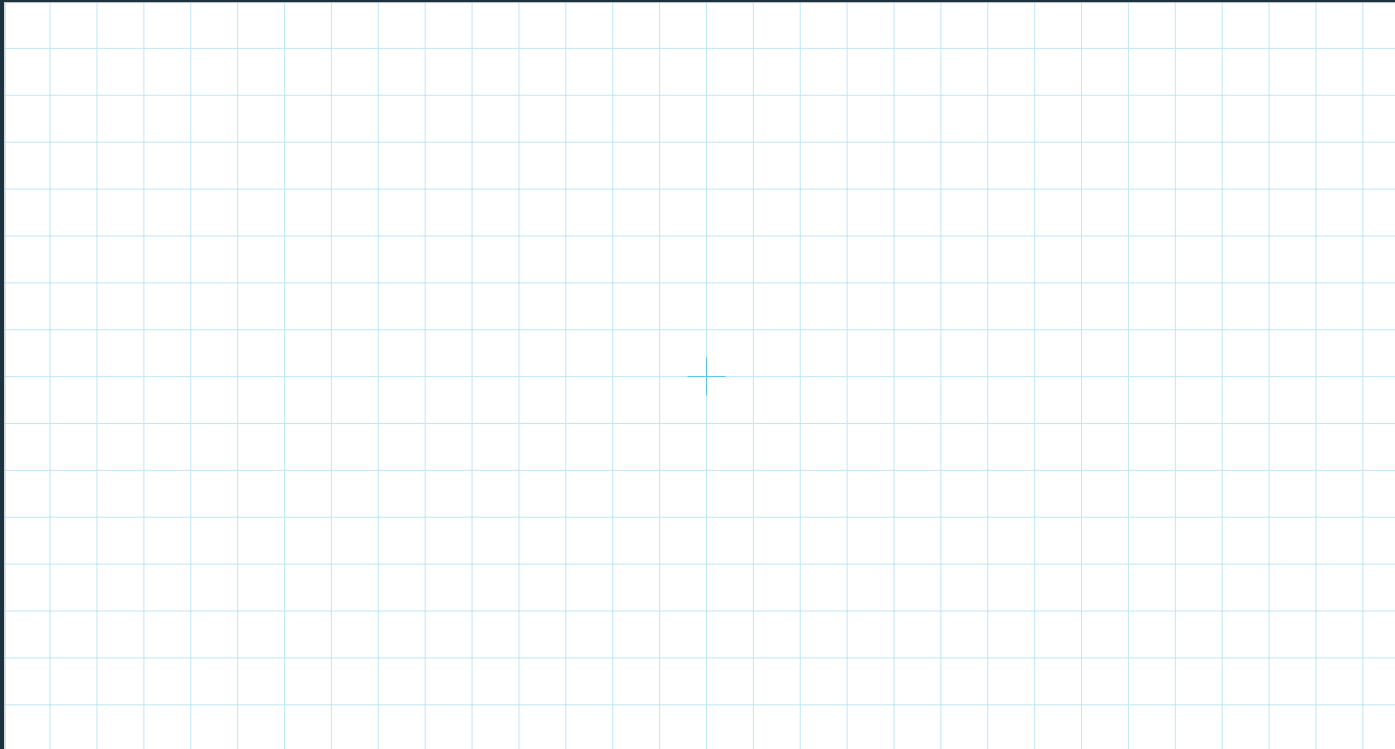
19



20

Custom Sketch

Please provide us with a sketch of your desired dock system.



11 Friars Drive | Hudson, NH 03051

info@fwmdocks.com

603.578.9699

fwmdocks.com

It all started in 1975 with FWM Inc., a family-owned business in Hudson, NH, that grew into one of the world's largest producers of aluminum cryogenic heat exchange vaporizers. In 1997 — moved by a shared passion for having fun on the water and powered by the expert aluminum welders and fabricators in our cutting-edge machine shop — we started making modular aluminum dock frames for family and friends. Demand has been pulling supply ever since. By 2004, our aluminum dock system was a huge hit, with a growing national reputation for quality craftsmanship and innovative design. At the same time, our deep understanding of the market moved us to expand our product line by becoming the Northeast's premier distributor of EZ Dock, a rugged, all-season, polyethylene dock system. Today we are proud to offer our customers a full spectrum of options as we work with them to build the safe, beautiful, long-lasting dock system of their dreams.